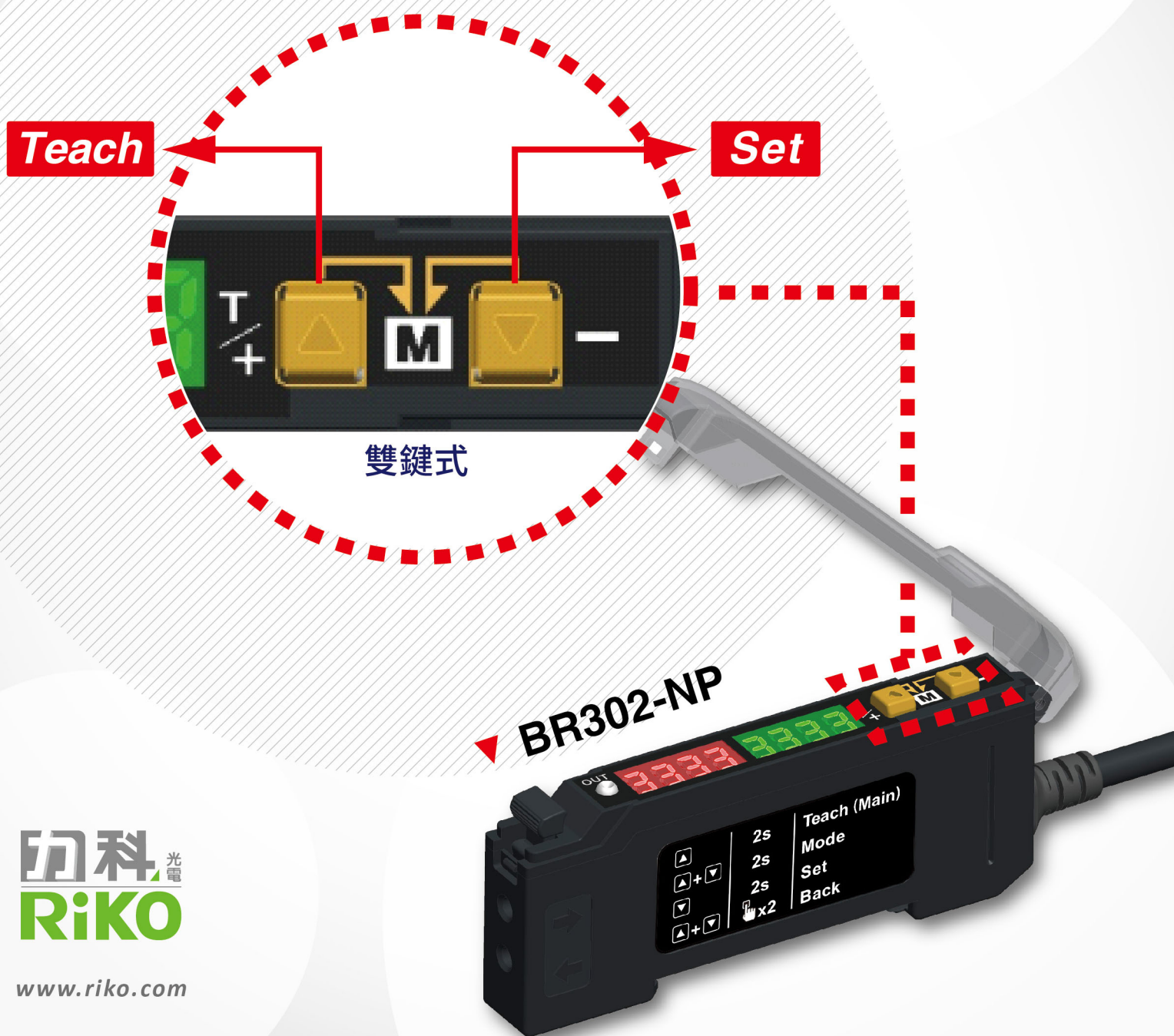


全世界最簡易、人性化 雙數顯光纖放大器

Easy operation Fiber Amplifier



力科 光電
RiKO

www.riko.com






NPN / PNP Output 2 in 1.

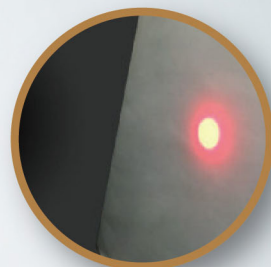
Characteristic / 特點:

- Easy to operate with 2 keys only.
/ 兩鍵設定，方便操作
- Response time selectable: (1000~1500 Hz).
/ 2段反應速度選擇: (1000~1500 Hz)
- One key teaching.
/ 單鍵兩秒，自動教導

Model / 型號	BR302-NP
Emitting light / 發光源	紅色 LED 660nm
Operating voltage / 工作電壓	DC12 ~ 24 \pm 10%
Current Consumption / 消耗電流	最大 30 mA Max.
Load current / 負載電流	100mA \pm 10% at DC 24V
Output / 輸出模式	NPN L.on / D.on PNP L.on / D.on
Protection circuit / 保護電路	Reversed Supply circuit protection. 逆接極性保護, 過電流保護
Response time / 反應時間	1000、1500 Hz
Indicators / 指示燈	Output輸出: Red LED / Set確認: Blue LED / Back退回: Green LED
Sensitivity adjustment / 靈敏度功能	4 位數值 (0000-4000)
Insulatoin resistance / 隔離阻抗	最小 20M Ω (DC500V)
Voltage withstandabiligy / 絕緣耐壓	AC500V 60Hz 持續 60 Sec.
Operating temperature / 工作溫度	- 10 $^{\circ}$ C ~ + 60 $^{\circ}$ C
Ambient humidity / 工作溼度	35% ~ 85% RH
Protection degree / 防水等級	IP50
Material / 外觀材質	ABS

User manual / 簡易操作說明:

	2s	Teach (Main)
	2s	Mode
	2s	Set
  x2		Back



光點 / Light spot:
1mm

M6

PRC-620-L20

感應距離 / SD: 30mm

M4

PTS2-420-T12

最小檢測物 /
Minimum sensing object :
0.5mm

90°

最新行業·解決方案

Newest industrial solutions.

光纖內含鏡頭

4大特點

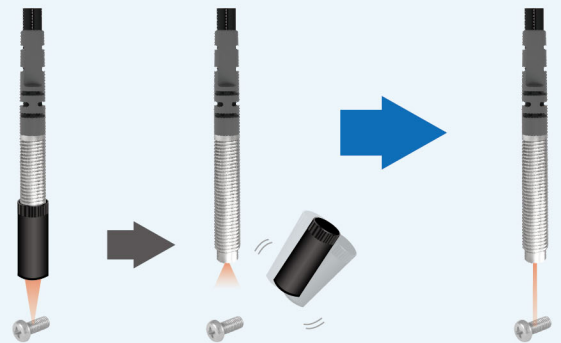
Lens Built In Fiber Sensor 4 Features.

1 穩定

Increase

鏡頭內含在光纖裡, 無須擔心因震動而脫落或偏移, 提升檢測穩定性

Fiber lens inside, no need to worry about falling off or shifting due to vibration, improved detection stability.

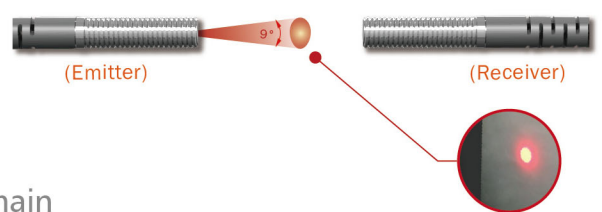


2 集中光點

Visible contracted beam

一般光纖為60度散光照射, 不易對準小物件集中檢測, 在內含鏡頭發光9~12度的小光點下, 易於對準被測物檢測

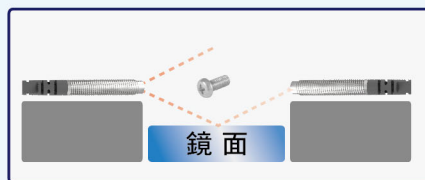
Small light spot, to keep emitter light on main sensing object. minimum sensing object 0.5mm.



3 減少周遭環境影響

Reduce the environmental impact

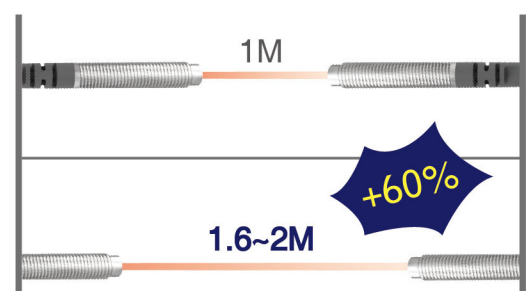
透過內含鏡頭抑制光的擴散, 同時可減少光繞射的影響
Through lens inside, the effect of light diffraction can be reduced.



4 檢測距離加長

Increasing sensing distance

內含鏡頭光纖PTS-420-B3, 比一般PT-420-B1光纖檢測距離加長60%, 更適用長距離檢測

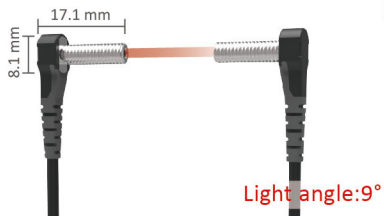


光纖內含鏡頭

Lens Built In Fiber Sensor

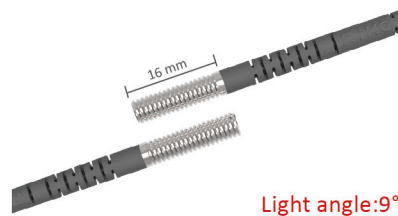
M4 Thrubeam type 對照式

安裝50公分可檢測0.5mm小物件 / Detecting tiny object (0.5mm) in 50cm.



PTS2-420-T12

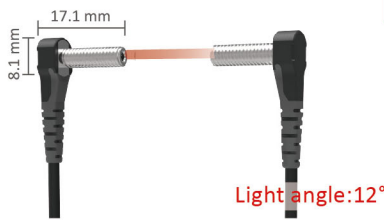
- Head: M4
- Cable dia.: 2.2mm
- Fiber core: 0.5mm
- min. bend: R15



PTS2-420-H12

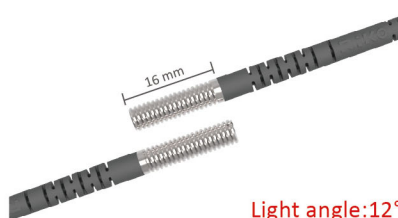
- Head dia.: M4
- Cable dia.: 2.2mm
- Fiber core: 0.5mm
- min. bend: R15

長距離安裝檢知 (1-2M) / Long sensing type (1-2M).



PTS2-420-T05

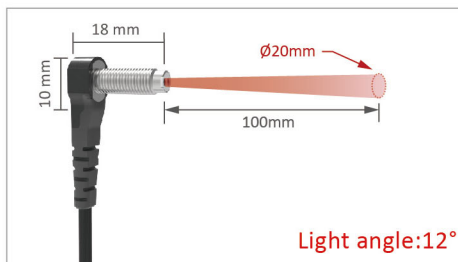
- Head: M4
- Cable dia.: 2.2mm
- Fiber core: 0.5mm
- min. bend: R15



PTS2-420-B3

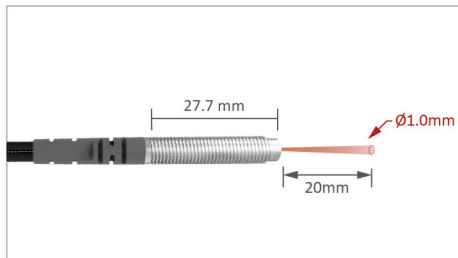
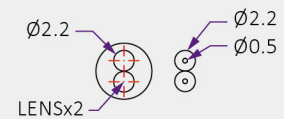
- Head dia.: M4
- Cable dia.: 2.2mm
- Fiber core: 0.5mm
- min. bend: R15

M6 Reflective type 反射式



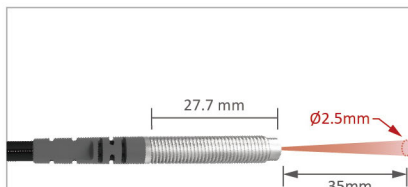
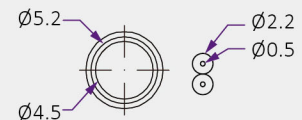
PRS2-620-T05

- Head: M6
- Cable dia.: 2.2mm
- Fiber core: 0.5mm
- min. bend: R15



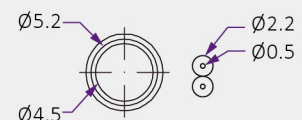
PRC-620-L20

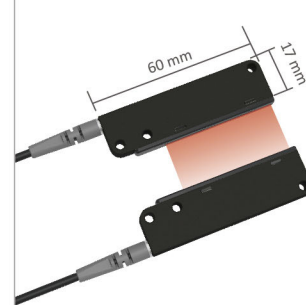
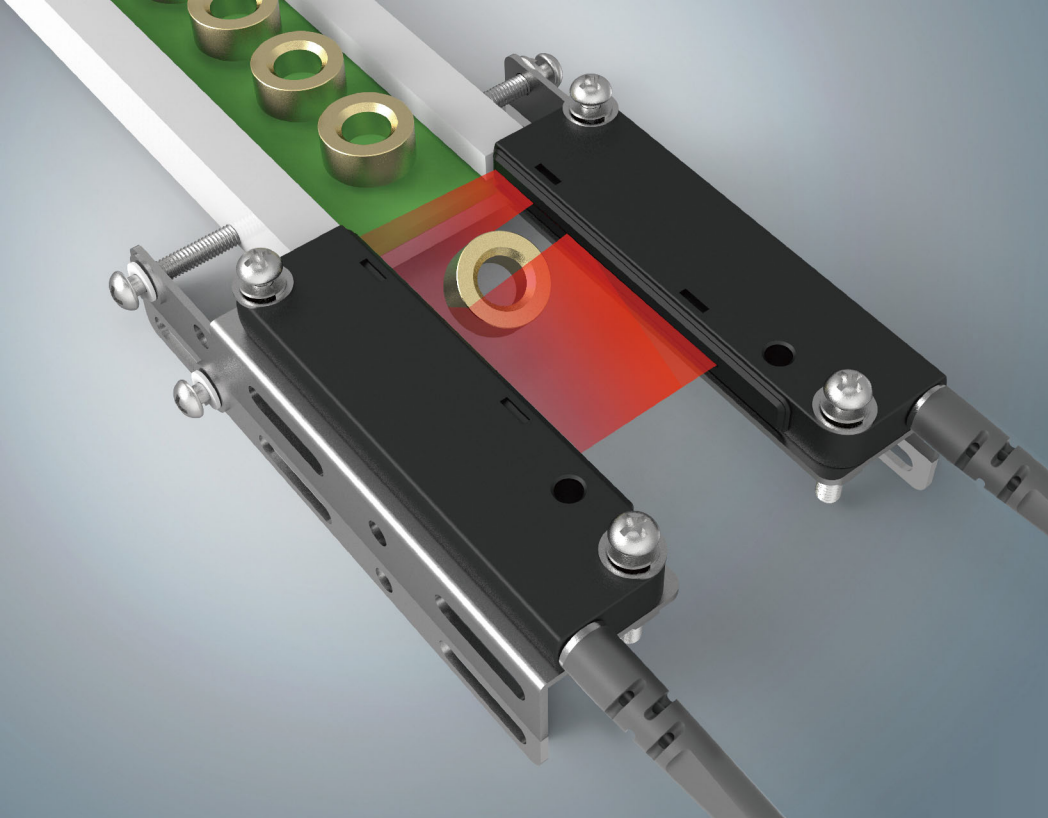
- Head: M6
- Cable dia.: 2.2mm
- Fiber core: 0.5mm
- min. bend: R15



PRC-620-L35

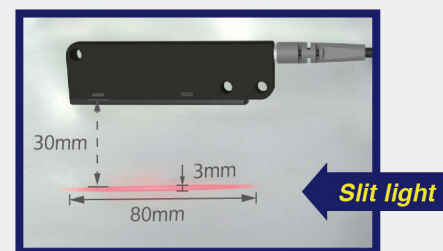
- Head dia.: M6
- Cable dia.: 2.2mm
- Fiber core: 0.5mm
- min. bend: R15



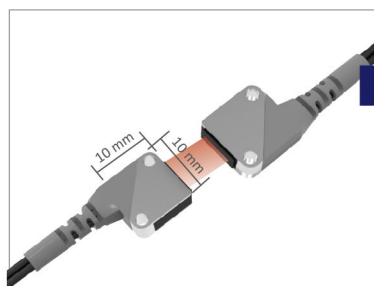


PT-060AL-20

- Dimensions (mm): 60*17*6
- Fiber Cores: 32
- Width: 39.5mm
- Emitter with lens / 內含鏡頭



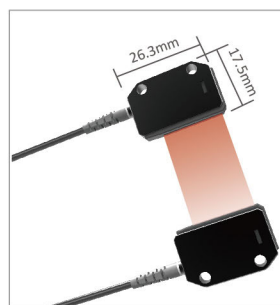
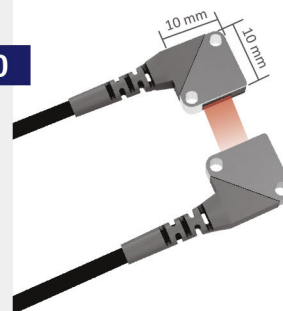
矩陣光纖 Array Fiber



PT-10ML-20

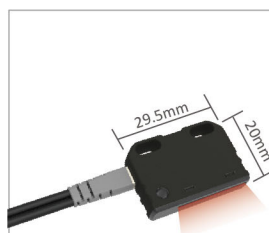
- Dimensions (mm): 10*10*3.5
- Fiber cores: 16
- Width: 4.24mm
- no pitch (Top Sensing)

PT-10MLD-20



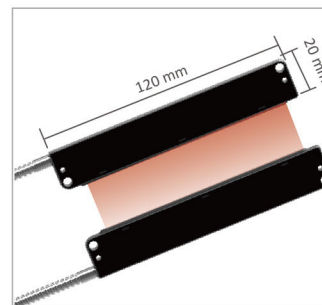
PT-025AL-20

- Dimensions (mm): 26.3*17*5
- Fiber cores: 16
- Width: 18mm
- Emitter with lens / 內含鏡頭



PR-028AL-20

- Dimensions (mm): 29.5*20*6.5
- Fiber cores: 32
- Width: 20mm
- Emitter with lens / 內含鏡頭



PT-100ML-20

- Dimensions (mm): 120*20*7
- Fiber cores: 125
- Width: 100mm
- 0.8mm pitch



www.riko.com

台灣力科光電總公司
T: +886-2-8228-7600
F: +886-2-8228-7611

23585 新北市中和區
建康路66號1樓

永鉅電機台北公司
T: +886-2-2225-6055
F: +886-2-2222-4987

23585 新北市中和區
建康路6號1樓

台北電料門市
T: +886-2-2225-8700
F: +886-2-2225-6977

23585 新北市中和區
建康路3號1樓

彰化辦事處
T: +886-4-753-0855
F: +886-4-752-3055

50067 彰化縣彰化市
金馬路三段439號9樓之2

台南辦事處
T: +886-6-268-6999
F: +886-6-268-6766

70172 台南市東區
東門路三段13號3樓之1

深圳威力科光電
T: 0755-8829-2577
F: 0755-8297-0960

深圳市寶安區西鄉街道
共和工業路36號國匯通
商務中心302室

蘇州分公司
T: 0512-6588-2559

江蘇省蘇州市姑蘇區
人民路3188號萬達廣場
A座1210室

日本聯絡處 T: +081-90-5579-4966



E-mail:
sales@riko.com